



# GAT MONTHLY MEMBERSHIP PROGRESS REPORT

Results as of: 5/31/2023

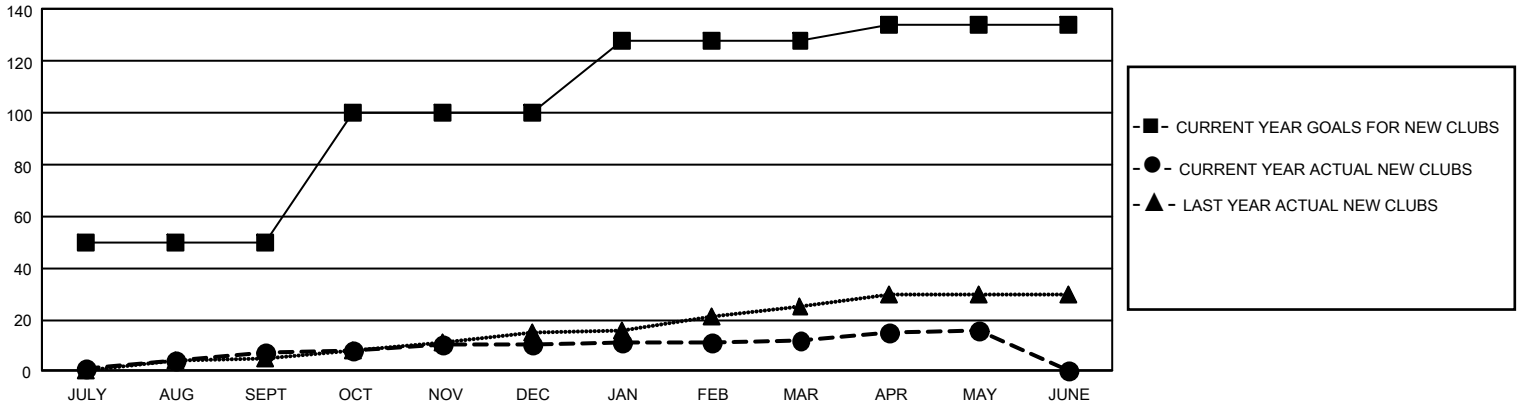
## GMT Constitutional Area 5 - K, Group K

REPORT DOES NOT INCLUDE CLUBS IN UNDISTRICTED AREAS.

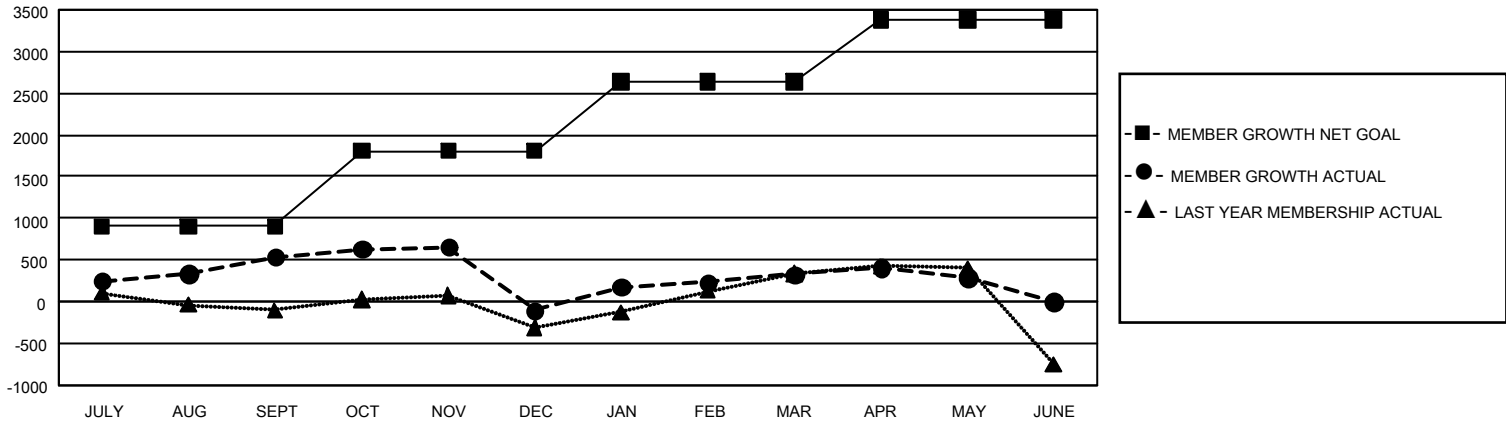
Clubs			
RESULTS FOR 2022-2023			
QUARTER	NEW CLUB GOAL	NEW CLUBS	DROPPED CLUBS
JULY/AUG/SEPT	150	7	6
OCT/NOV/DEC	150	3	13
JAN/FEB/MAR	84	2	5
APR/MAY/JUNE	18	4	0

Members			
RESULTS FOR 2022-2023			
QUARTER	MEMBER GROWTH NET GOAL	MEMBER GROWTH ACTUAL	DROPPED MEMBERS ACTUAL (including transfers)
JULY/AUG/SEPT	900	1,499	919
OCT/NOV/DEC	910	800	1,406
JAN/FEB/MAR	825	1,030	566
APR/MAY/JUNE	750	503	520

GOALS AND ACTUAL NEW CLUBS CUMULATIVE



GOALS AND ACTUAL MEMBERS CUMULATIVE



<b>DROPPED CLUBS: 24</b>	602 CLUBS OF 834 ADDED 1 OR MORE NEW MEMBERS	<b>GENDER DISTRIBUTION</b>	
		MALE 18,039 (69.38%) FEMALE 7,963 (30.62%) NON BINARY 0 (0.00%) PREFER NOT TO ANSWER 0 (0.00%)	
<b>DROPPED MEMBERS</b>		<a href="#">CLICK HERE FOR CUMULATIVE MEMBERSHIP DATA</a>	
DECEASED 78 CLUB CANCELLED 302 OTHER 3,031 <b>TOTAL 3,411</b>		TOTAL FAMILY UNIT MEMBERS 2,924 FAMILY MEMBERS PAYING HALF DUES 1,704	